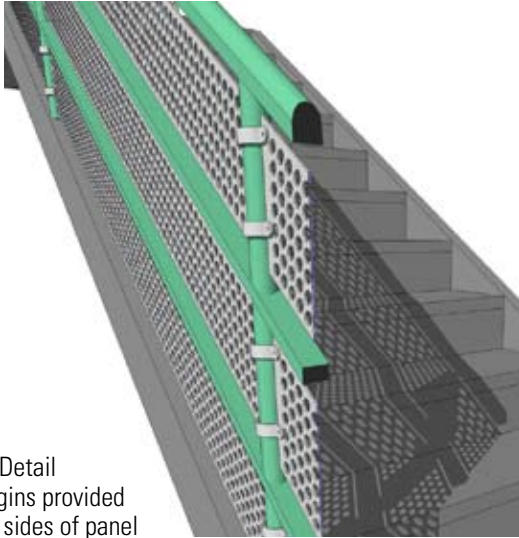


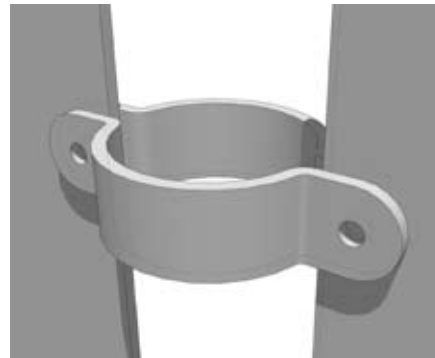
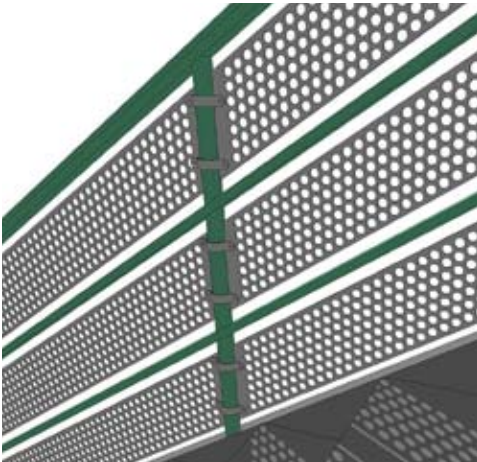
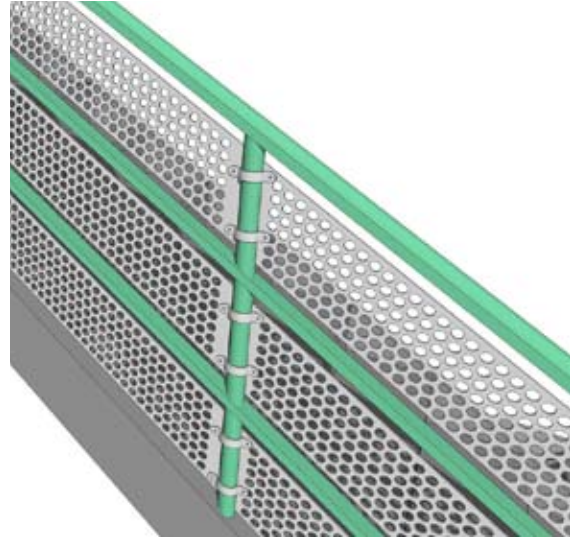
Hendrick Retrofit Infill Panel Solution

No Drill Design for Easy Installation

Bring your existing railings up to the latest IBC code without complexity!



Cut Away Detail
Note: margins provided
on all four sides of panel



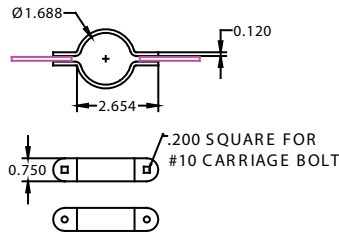
See other side for more clip option details

Call us to discuss your stair rail condition

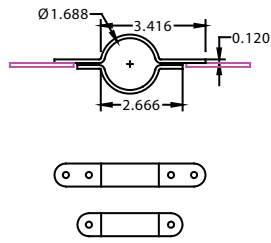
The IBC code IBC 1003.2.12.2 Opening limitations: Summary of code: Guardrails shall be located along side of surfaces where there is a drop of more than 30 inches to the floor or grade below." Open guards shall have balusters or ornamental patterns such that a 4 inch diameter sphere cannot pass through any opening up to 34 inches.



Retro Fit Railing Clip Options:



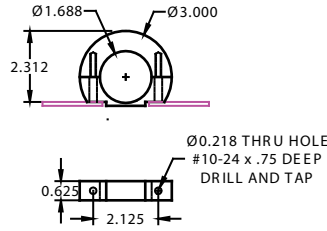
11 GA 304-#4 STAINLESS STEEL
Clip shown on front page



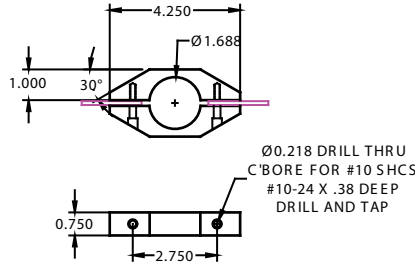
11 GA 304-#4 STAINLESS STEEL



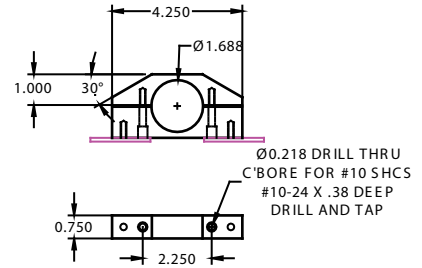
COUNTERSINK FOR
FLUSH HEAD RIVET



MACHINED 6061-T6 ALUMINUM

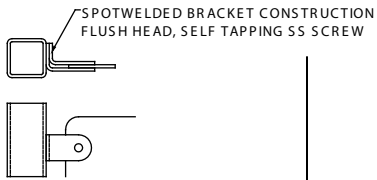


MACHINED 6061-T6 ALUMINUM

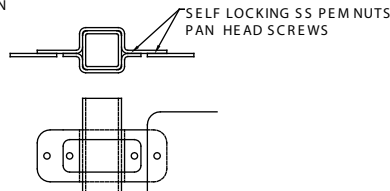


MACHINED 6061-T6 ALUMINUM

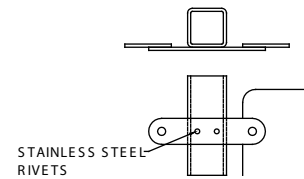
Square Railing Clip Options:



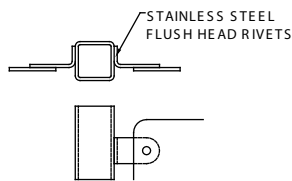
11 GA 304-#4 STAINLESS STEEL



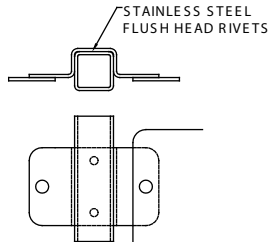
11 GA 304-#4 STAINLESS STEEL



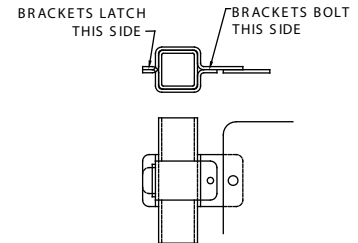
11 GA 304-#4 STAINLESS STEEL



11 GA 304-#4 STAINLESS STEEL



11 GA 304-#4 STAINLESS STEEL



11 GA 304-#4 STAINLESS STEEL

Hendrick has many custom railing infill solutions

